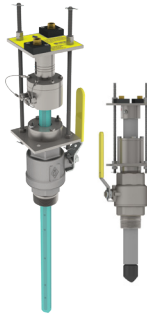


## Electromagnetic Flow Meters



Insertion mag meters offer ease of installation and total cost savings for customers. The FPI Mag delivers accuracy unmatched by other insertion meters and rivals the performance of full-bore mag meters.



FPI Mag	
<b>Media:</b>	<b>Applications:</b>
Potable water	Agriculture
Cooling water	Municipal
	Industrial

SPI Mag	
<b>Media:</b>	<b>Applications:</b>
Potable water	Agriculture
Waste water	Municipal
Cooling water	Oil and gas
	Industrial



The Ultra Mag is a leading-edge mag meter that requires only 1D upstream and 0D downstream of most flow disturbers, and still maintains 0.5% accuracy across a large flow range.



Media:	Applications:
Potable water	Agriculture
Waste water	Municipal
Cooling water	Oil and gas
	Industrial



The Dura Mag is an affordable, full bore mag meter that provides rugged durability and telemetry-ready options for agricultural and municipal customers.



Media:	Applications:
Potable water	Agriculture
Cooling water	Municipal
	Oil and gas
	Fracking
	Industrial



With a five-year battery life, data logging capability and saddle mount design, the Mc Mag<sup>3000</sup> delivers dependability and easy installation.



Media:	Applications:
Potable water	Agriculture
Waste water	Irrigation



Designed for agriculture and irrigation, McMag2000 offers low cost of ownership with mag meter technology for the price of a propeller meter.



Media:	Applications:
Potable water	Agriculture
Waste water	Municipal

## Propeller Flow Meters



The best selling propeller meter in the U.S., the McPropeller meter is the market standard for ease-of-use and value for agricultural, municipal, industrial, and turf markets since 1955.



Media:	Applications:
Potable water	Agriculture
Cooling water	Municipal
	Oil and gas
	Industrial



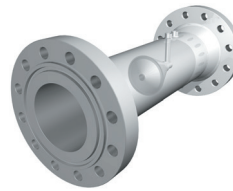
Water Specialties propeller meters offer minimal maintenance and maximum durability, making them particularly well suited for the municipal market.

Media:	Applications:
Potable water	Agriculture
Cooling water	Municipal

## Differential Pressure Flow Meters



The original cone meter, McCrometer's V-Cone is designed for the most challenging applications. Customizable to meet needed specifications, the V-Cone offers best in accuracy and repeatability while also providing customers wider rangeability, installation flexibility, and reduced maintenance.



Media:	Application:
Potable water	Agriculture
Waste water	Oil and gas
Cooling water	Municipal
Liquid natural gas	Industrial
Steam	
Natural gas	
Wet gas	



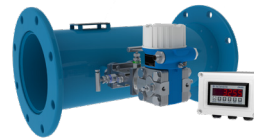
Optimized for small line sizes and designed with an interchangeable cone, the Wafer-Cone offers the scalable and adaptable solutions our customer's processes depend on while maintaining high accuracy and repeatability.



Media:	Application:
Potable water	Oil and gas
Waste water	Municipal
Cooling water	Industrial
Liquid natural gas	
Steam	
Natural gas	



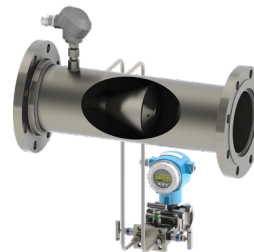
All the outstanding features of V-Cone specially packaged for municipal applications. The VM V-Cone combines high performance and accuracy with low head loss to provide a self-conditioning solution that reduces costs.



Media:	Application:
Potable water	Municipal
Waste water	
Cooling water	



A highly accurate V-Cone package optimized for saturated and superheated steam measurement. ExactSteam is a plug and play solution focused on high reliability and low maintenance cost.



Media:	Application:
Steam	Industrial

## Connected Solutions



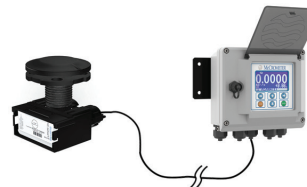
FlowConnect is a built-in solution for collecting and transmitting flow data from McCrometer's McPropeller and Water Specialties flow meters.



Used with Products:
McPropeller
Water Specialties



Smart Output enables McCrometer's magnetic flow meters to communicate with AMI and AMR systems.



Used with Products:
All meters that use the ProComm converter



A complete solution for wireless irrigation and crop management. Provides real-time data reports on soil moisture, weather, frost, water level, meter reading, and much more.



Compatible with
McCrometer's agricultural meter product suite