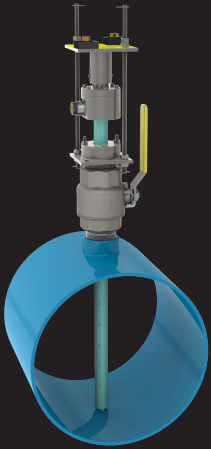
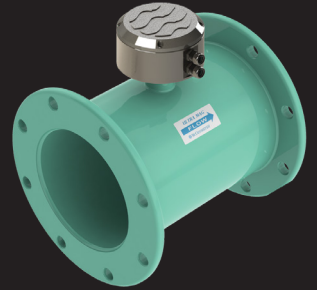




Flow Meters FOR THE MUNICIPAL WATER INDUSTRY

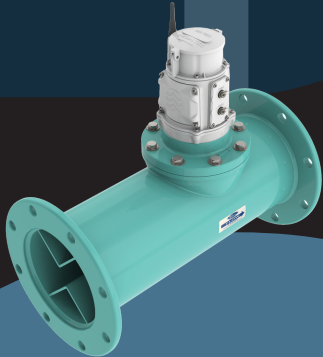
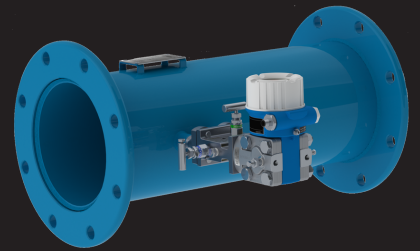


The Ultra Mag®'s unique **NSF-approved UltraLiner™** eliminates problems with delamination and is ideal for applications near pumps, water wells, and other municipal locations.



The FPI Mag® is the **quick-installation** choice for tough applications and retrofits, eliminating the need to interrupt service and cutting installation and ownership costs up to 45%.

The VM V-Cone® provides unprecedented accuracy with **minimal straight-run requirements**. It is the space-saving choice for applications with challenging flow conditions or weight restrictions. Acting as its own flow straightener, the VM V-Cone can be placed close to elbows, valves, and pumps.



The Water Specialties® propeller meter is engineered to deliver superior performance, low maintenance and **unsurpassed durability**. With an integrated FlowConnect™ telemetry unit featuring ExactRead™ technology, data collection is automated for reliable resource management.

EXPERTISE

McCrometer's team of experts customizes all meters to best fit each application. From initial quote to product installation, McCrometer is **your partner in flow measurement.**

Did you know?



McCrometer mag meter technology is based on Faraday's Law of Electromagnetic Induction, a technology that can measure voltage as proportionate to current flow.



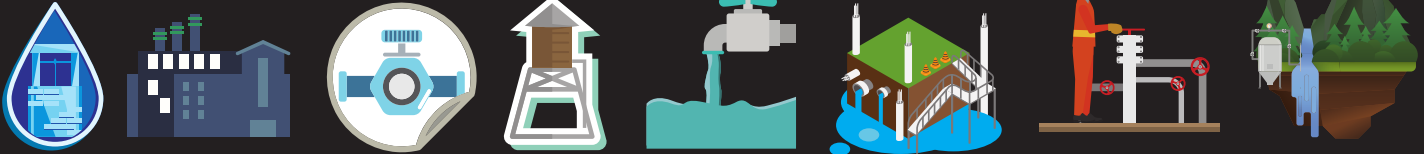
THANKS, MR. FARADAY!

McCrometer meters support water management objectives, including:

- Operations & Metering
- Billing & Accounting
- Conservation
- Regulations & Allocation
- Planning & Development



MUNICIPAL APPLICATIONS



Distribution | Wells, Pumping, & Booster Stations | Effluent | UV Dosing | Filter Balancing & Backwash | Recycled & Reclaimed



±0.5%

McCrometer meters are designed with unique operating principles, and deliver accurate readings up to ±0.5%

45%

The FPI Mag meter can save up to 45% in installation and ownership costs

ProComm is the newest mag meter converter for the McCrometer product suite. Its sleek design and easy installation creates a **seamless user experience**, and features conduit-friendly fittings, built-in verification, and internal data logger. Constructed with input from McCrometer's municipal customer base, ProComm is the flexible converter that takes the hassle out of daily monitoring.

PROCOMM



AMI/AMR | Built-In Verification | Internal Data Logger | 4-20mA & Pulse Output | HART & ModBus Protocols

Learn more about **saving money** and increasing efficiency with McCrometer flow meters.

www.mccrometer.com/muni

Lit. # 30124-70 Rev. 1.0 28MAY2019