



Flow Measurement Solutions for Power Generation

Insertion and full-bore mag meters for power generation cooling water, differential pressure meters for hot water, steam, and gas.



Install a metering point for the life of your facility.

You can't manage what you don't measure. Invest in a flow meter that provides you with the flow data you need to make informed decisions about daily operations. McCrometer's Full Profile Insertion Mag Plus (FPI Mag® Plus) is **perfect for retrofits using hot-tap installation without shutting down your process.** Our Vera Mag™ comes in standard ISO lay-lengths, but can be made with custom lay lengths to accommodate upgrading older meters, offering the ultimate flexibility. Our differential pressure V-Cone® requires minimal-to-no upstream and downstream straight runs to better fit your gas, steam, or hot water applications. The Wafer-Cone®, the flangeless version of the V-Cone, has interchangeable cones for dynamic hot water and steam flows.

Talk about versatility!

We recommend watching our YouTube videos to become more informed about installation and meter functionality. You may download each product's specification sheets and manuals from our website to understand more of the technical details. The flow professionals at the factory are always available to answer questions and provide a quote when you're ready to start your next flow project.



www.youtube.com/mccrometer



www.mccrometer.com/ind



quotes@mccrometer.com

FPI Mag[®] Plus

Proprietary installation tool ensures straight and accurate insertion even against system pressure.

Up to $\pm 0.5\%$ **accuracy** and 4" to 138" line sizes available.

Ball valve to allow **ease of insertion** and removal via hot tap connection.

Stainless steel or hastelloy electrodes best suited for conductivity in **tough water applications**.

High-temperature (200°F) fusion-bonded epoxy coating impervious to chemicals in chill water.

Modbus, 4-20mA, pulse, Sensus, Itron, Ethernet IP, and telemetry outputs available and **NSF-61 certified** for drinking water applications.

An FPI Mag installed in an industrial facility.



www.mccrometer.com/ind

Vera Mag[™]



The Vera Mag's unique **UltraLiner[™]** eliminates problems with delamination and is ideal for tight applications on either side of pumps. An ideal alternative to traditional lined mag meters, the UltraLiner is durable and impervious to harsh chemicals and debris in flow media.



Offered in standard ISO lay lengths of 1.5" - 24", the Vera Mag can also be customized to retrofit and replace **non-standard lay length** meters, eliminating the need for additional spool pieces or welding.



Modbus, 4-20mA, and pulse outputs are available, and the Vera Mag maintains up to $\pm 0.2\%$ **accuracy** with minimal straight runs needed. Hart, Ethernet IP, and BacNet coming soon!



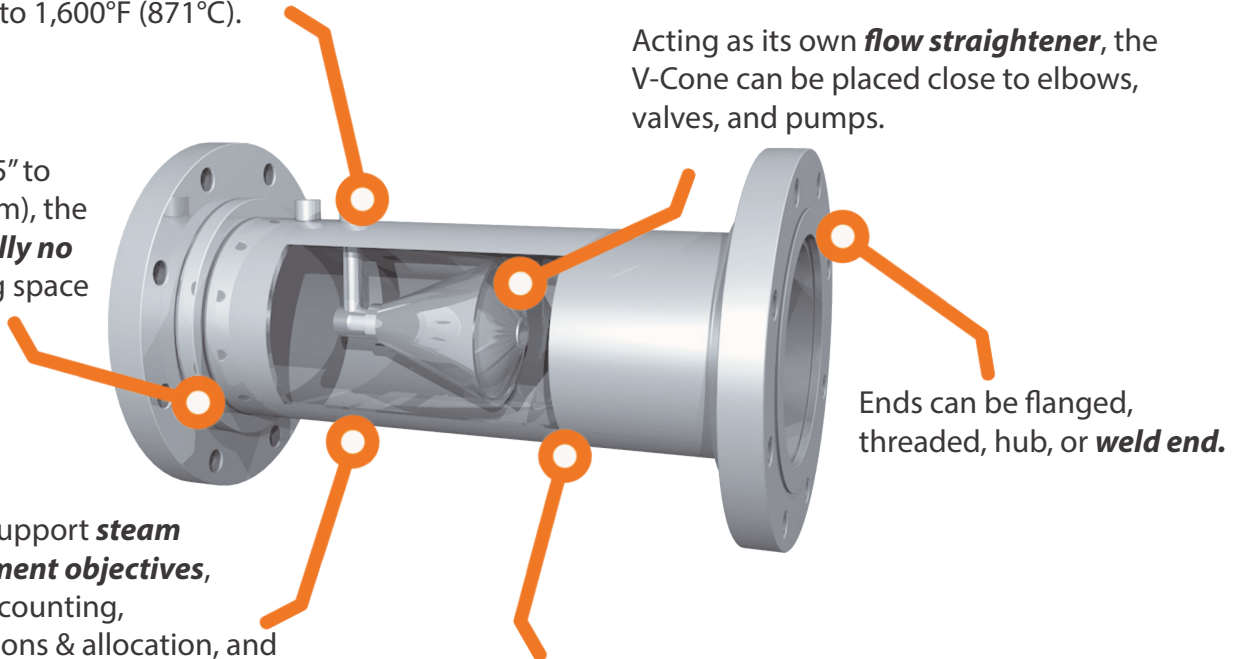
The Vera Mag offers stainless steel or hastelloy electrodes, 150# or 300# ANSI flanges, AC or DC power, and is best suited for a **variety of high temperature flow media up to 200°F**.



The V-Cone[®]

Perfect for steam, hot water, and gas measurements, offering up to **±0.5% accuracy**, pressure up to 20,000 psi, and temperature up to 1,600°F (871°C).

Available in line size 0.5" to 120" (12.7mm - 3048mm), the V-Cone requires **virtually no straight-run**, providing space and budget savings.



Acting as its own **flow straightener**, the V-Cone can be placed close to elbows, valves, and pumps.

Ends can be flanged, threaded, hub, or **weld end**.

McCrometer meters support **steam and energy management objectives**, including: billing & accounting, conservation, regulations & allocation, and more.

Custom built from material of choice including but not limited to: 304SS, 316 SS, Duplex 2205, Hastelloy C-276 and more.



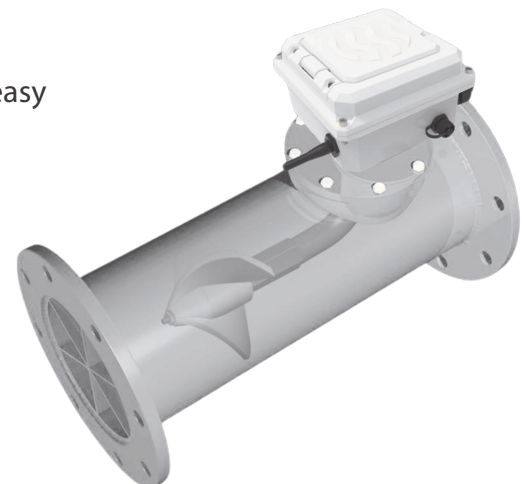
The Mc[®]Propeller is well-suited for **dirty water flows** and handles solids suspended in water without clogging. Epoxy-coated carbon steel (optional stainless steel) body and polymer propeller provide **extreme corrosion-resistance** and durability against harsh flow media.



Many **configurations** are available including saddle-style, top-plate, reverse-flow, and more. Removable top plate allows for easy access during field service or replacement.



Integrated SmartTrax[™] **telemetry** provides convenient remote data collection and monitoring via satellite and cellular signal. The McPropeller offers **field-proven technology** that is cost-efficient, reliable, and easy to install.



www.mccrometer.com/ind

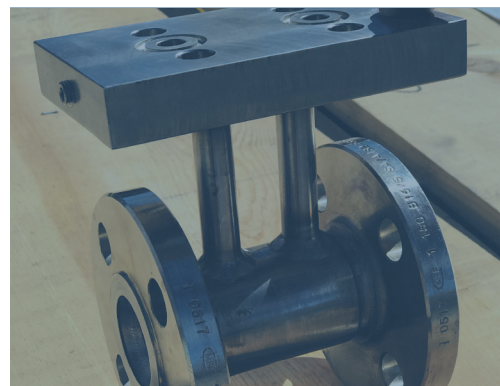
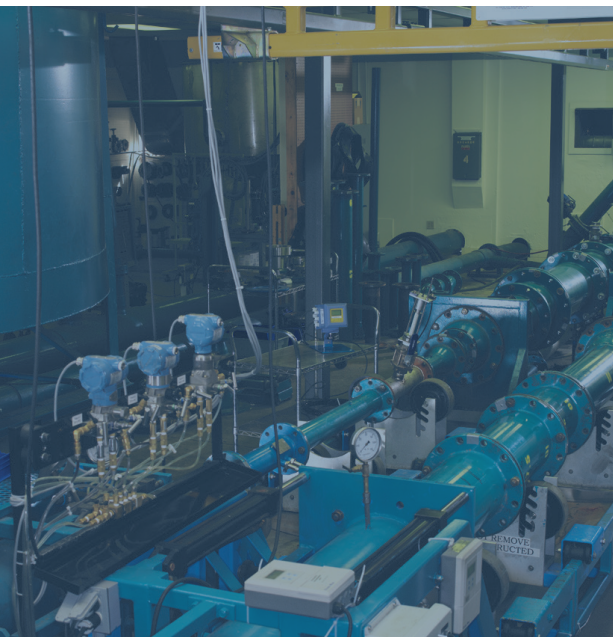
Product Compatibility

	V-Cone®	FPI Mag® Plus	Vera Mag™	Mc®Propeller
Air/Exhaust Flow	X			
Chill Water		X	X	
Cooling Tower		X	X	
Feed Water		X	X	X
Hot Water		X	X	
Natural Gas	X			
Raw Water		X	X	X
Steam	X			
Steam Condensate	X			



Flow Measurement Solutions for Power Generation

Insertion and full-bore mag meters for power generation cooling water, differential pressure meters for hot water, steam, and gas.



30126-16 Rev. 1.1 | 18SEP2024