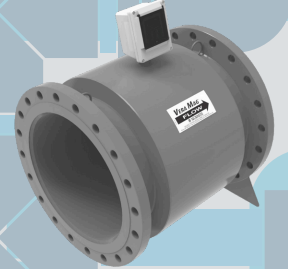


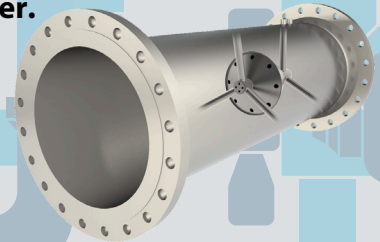
McCrometer Flow Meters for Industrial Applications



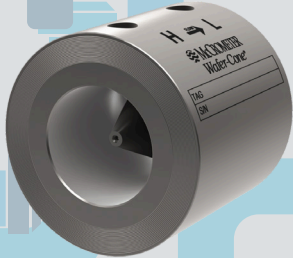
The unique **NSF-approved UltraLiner™** on the Vera Mag™ eliminates problems with delamination and is ideal for tight applications on either side of pumps, providing up to $\pm 0.2\%$ accuracy. Thanks to the high-temperature (200°F), fusion-bonded epoxy coating, the Vera Mag's lay length can be customized to replace ISO-standard lay length meters without the need of additional spool pieces or welding.



The FPI Mag® Plus is the **quick installation** choice for tough applications and retrofits, eliminating the need to interrupt service, dewater lines, or cut pipe. Flexible installation, minimal maintenance, and high-temperature durability minimize installation and ownership costs up to 45% over the life of the meter.



The V-Cone® provides unprecedented accuracy with **minimal straight-run requirements**. It is a space-saving choice for applications with challenging flow conditions or weight restrictions. Acting as its own flow straightener, the V-Cone can be placed close to elbows, valves, and pumps.



The Wafer-Cone® provides the similar properties as the VM V-Cone® in a wafer style for smaller lines sizes with a **replaceable cone** to change your Beta ratio when flow conditions change.

PROCOMM MAX™

ProComm Max is the newest mag meter converter to the McCrometer product suite. Its modular design **adjusts to the needs of the application** without compromising performance, quality, or cost. The unit accommodates multiple communication protocols through two expansion slots. The ProComm Max **eliminates signal degradation**, only sending digital signals and increasing the stability and reliability of measurements.

- C11, Div 2
- Modular design
- Internal Data Logger
- 4-20mA, Modbus, & Pulse
- SmartTrax™ telemetry
- HART, Ethernet IP, BacNet coming soon!



EXPERTISE

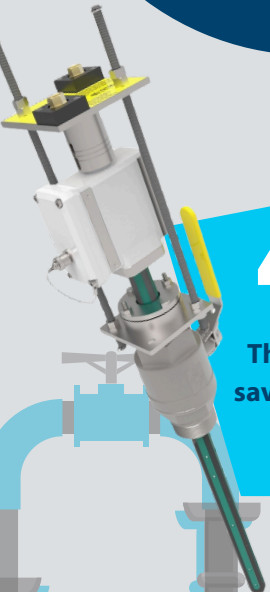
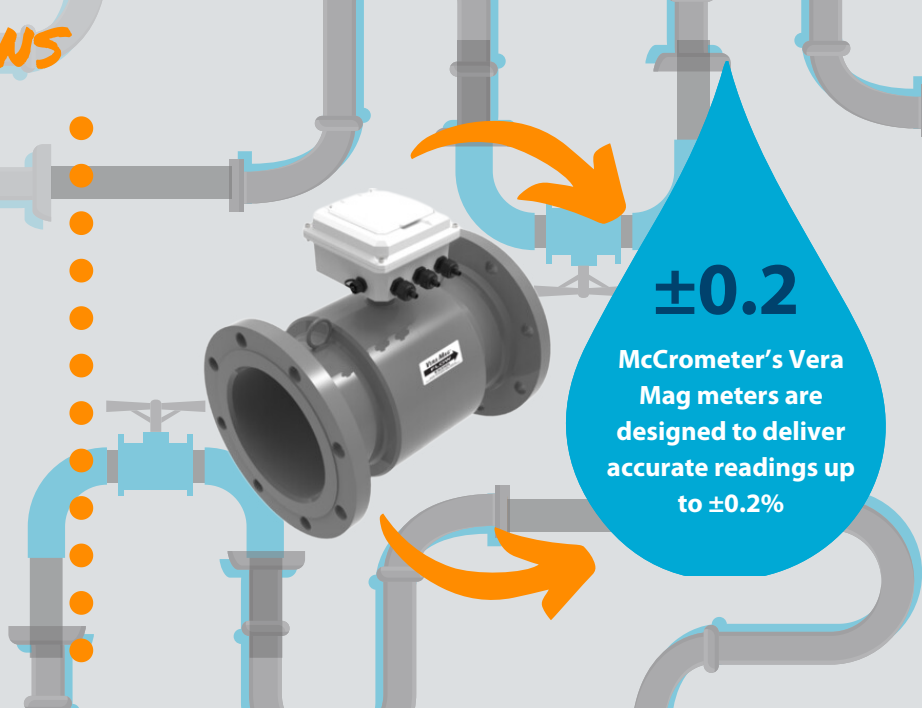
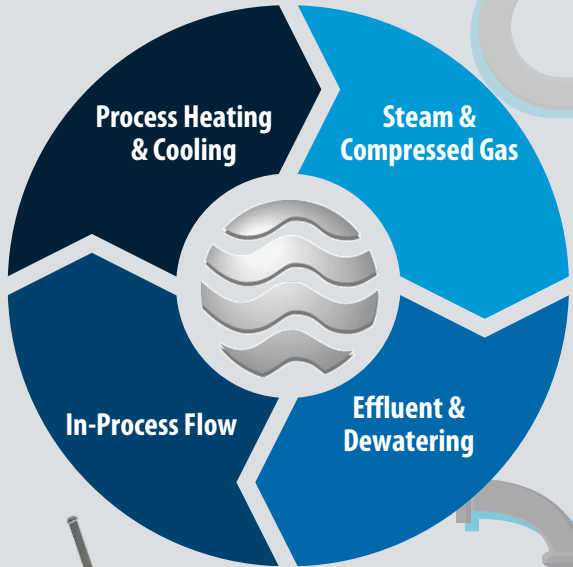
McCrometer's team of experts customizes all meters to best fit each application. From initial quote to product installation, McCrometer is **your partner in flow measurement.**

POPULAR INDUSTRIES



Food & Beverage | Manufacturing | Metals & Mining | Pulp & Paper | Marine | Military | Pharmaceuticals | Hospitals & Campuses

POPULAR APPLICATIONS



45%

The FPI Mag Plus meter can save up to 45% in installation and ownership costs

Did you know?



McCrometer mag meter technology is based on Faraday's Law of Electromagnetic Induction, a technology that can measure voltage as proportionate to current flow.

THANKS TO MR. FARADAY!

McCrometer meters support water and steam management objectives, including:

- Process, Operations & Metering
- Billing & Accounting
- Conservation
- Regulations & Allocation
- Planning & Development



Learn more about **saving money** and increasing efficiency with McCrometer flow meters.

www.mccrometer.com/ind