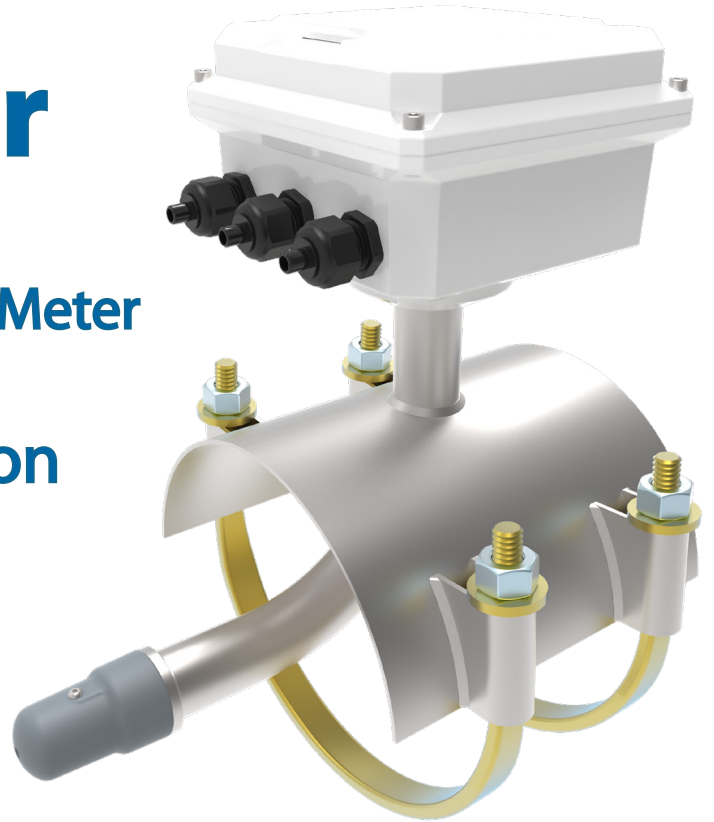




McMag²⁰⁰⁰[™] Flow Meter

The Durable and Reliable Mag Meter
Designed for
Agriculture and Irrigation



The Best Mag Meter Solution For Irrigation Flow Measurement



ProComm GO Electronic Converter

- Rate and total on one screen
- No scrolling
- No water intrusion to damage electronics
- Quick, at-a-glance meter reads
- No external power or cords required



Quick and easy to install in-field, minimizing downtime



Modular design - each piece can be independently replaced and self-serviced



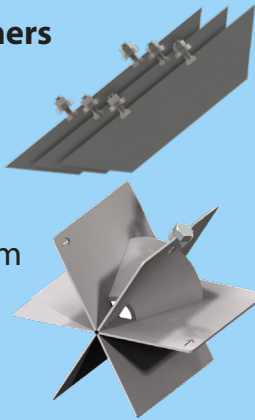
The McMag2000 has an overall low cost of ownership, offering mag technology at a wallet friendly price and with in-field replacement kits



The saddle-style design and DIY converter programmability allow for portability

Configurable with Flow Straighteners

- Can be used with the FS100 and FS200 flow straightener, tri-vanes, or wafer vanes
- Reduce your upstream/downstream distances
- User configurable



Ethernet cable and connector

Saddle

Sensor

U bolts



When is the Mc Mag²⁰⁰⁰ the best option for my irrigation application?

The McMag²⁰⁰⁰ provides farmers and irrigators an affordable and easy-to-read Flow meter with minimal maintenance and little to no downtime. As the only flow meter on the market with a price tag comparable to a McPropeller meter, the McMag²⁰⁰⁰ has a low cost of ownership without compromising durability and accuracy. The McMag²⁰⁰⁰ is portable, making it an efficient purchase for users with multiple irrigation lines. This mag's familiar saddle-style form and streamlined functionality allows for simple retrofit from McPropeller. Field serviceability guarantees minimum downtime and maximum control. It's the hassle-free, wallet-friendly, works-when-you-need-it-to, simple to use, mag meter, only from McCrometer.

Typical Applications

- Center Pivot Systems
- Well Monitoring
- Water Distribution
- Chemigation
- Livestock Waste Lagoons
- Surface Water
- Golf Courses and Park Management



Simple and Effective

- Available with all of the features you need, none of the features you don't
- Straightforward, hassle-free installation; just cut the pipe and bolt on
- Easy to read converter that calculates both total and instantaneous flow

Designed for Accuracy, Built to Last

- Innovative patent pending sensor design takes the measurement from the center of your pipe for an ideal flow profile, optimized accuracy and repeatability
- Durable, built with a time-tested rugged design
- Consistent and repeatable measurements due to the simplicity of our proven design
- Versatile, with a wide range of applications

Benefits

- 5-year full warranty
- +/- 2% accuracy
- Easy in-field installation
- Simple retrofit conversion from existing Mc Propeller saddle meters
- Low maintenance
- Low cost of ownership
- Minimal pipeline intrusion

To find out more about our flow measurement products, or for a free flow evaluation, contact your nearest McCrometer representative today or visit our website at www.mccrometer.com. You can reach us directly at 1-800-220-2279.

Specifications

DESIGN & MATERIALS

Line Sizes	4" to 16"
Meter Type	Saddle-style insertion electromagnetic meter
Straight-run Requirements	With or without straightening vanes: 5D upstream / 2D downstream With flow straightener: 1.5D upstream / 1 downstream
ProComm GO Converter	<ul style="list-style-type: none"> • Rate and total on one screen • Sealed within a die-cast aluminum case • Includes a domed acrylic lens and a hinged lens cover with locking clasp • Pulse-out available for system integration • IP67 to protect from harsh environments • DC power optional
Retrofit	Available using McPropeller saddle

PERFORMANCE

Accuracy	±2% accuracy, or ±0.25% of standard full scale flow
Operating Temperature	-4°F to 140°F (-20°C to 60°C)
Storage Temperature	-40°F to 149°F (-40°C to 65°C)

Any published technical data and specifications are subject to change without notice.



Committed to Quality Manufacturing in the USA



McCrometer prides itself on the fact that all of its flow meters are designed, manufactured, and tested in the USA. Manufacturing takes place in our headquarters in Hemet, California and we own and operate one of the world's largest volumetric test facilities in Porterville, California. Our manufacturing facilities and quality control systems are the foundation for being a trusted supplier. Our USA based, high quality manufacturing is another reason our customers around the world have confidently chosen McCrometer flow meters for their most challenging flow applications since 1955.

