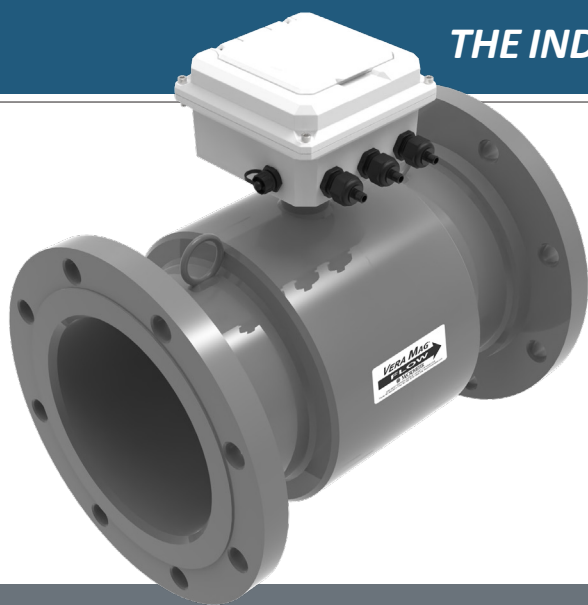


INTRODUCING THE VERA MAG SERIES

ELECTROMAGNETIC FLOW METER SUITE OF PRODUCTS

VERA MAG 3000 WITH PROCOMM GO™

THE INDUSTRIAL BATTERY POWERED METER OF CHOICE



The Vera Mag 3000 brings the best attributes of our battery powered technology for use inside the fence of industrial facilities. Remote source water and effluent flows now have the perfect partner to provide accurate, reliable, and quantifiable data to inform process and regulatory requirements. Remote monitoring just got better with the addition of the Vera Mag 3000 coupled with our SmartTrax telemetry which puts the data in front of the decision makers without running cables for data collection or physically visiting the meter to retrieve data.

- Line size: 1.5" - 24" in ANSI #150 or #300
- Liner: Fusion Bonded 135 Epoxy Coating, NSF rated to 200°F
- Electrodes: Stainless Steel standard, Hastelloy optional
- Flanges: ANSI 150# ANSI #300

The Vera Mag 3000 flow meter is accompanied by the ProComm Go™ electronics and is battery powered, ideal for remote installations and locations with unreliable power sources.

- Output options include pulse, 4-20mA, and telemetry
- Built in Data Logger
- Battery powered with optional AC/DC with battery backup
- Offering $\pm 1\%$ accuracy
- DIY battery replacement and in-field programming available via USB cable and laptop
- Optional CI1, Div2 rated
- 2-year full meter warranty, 5-year battery life





VERA MAG 5000 WITH PROCOMM MAX™

THE PERFECT CHOICE FOR HIGH POWERED PLANT APPLICATIONS

The Vera Mag 5000 is the ideal choice throughout the plant; from chill water to hot water or process water and everything in between. With our ISO standard lay lengths, fusion bonded 135 epoxy coating liner rated to 200°F and our standard accuracy of +/-0.2% sized from 1.5" to 24" in ANSI #150 or #300, we have the bases covered for water-based flow measurements in your plant. Our modular electronics design allows you to add future communications protocols as the plant systems are upgraded. Analog 4-20mA, pulse and Modbus are available today and are CI1, Div2 rated.

- Line size: 1.5" to 24"
- Fusion bonded 135 epoxy coating rated to 200°F
- Electrodes: Stainless Steel standard, Hastelloy optional
- Flanges: ANSI #150 (285psi), or ANSI 300#(500psi)
- Data Logger: Standard
- Standard Outputs – Pulse, 4-20mA
- Modular Outputs – Modbus, (*HART, *Ethernet IP) *future

The Vera Mag 5000 is paired with the ProComm Max™ electronics, offering greater accuracy and more sophisticated output options for users needing scalable, superior system integration and data collection options.

- Standard Output options include Pulse, 4-20mA
- Modular Outputs – Modbus, (*HART, *Ethernet IP) *future
- Optional Class 1 Div 2
- AC/DC powered
- ±0.2% standard accuracy
- Bi-directional
- Rated to 200°F for high temperatures
- CRN, CE, UL, CSA certifications

